

# JIU VALLEY

**Let's reinvent together!**



***Collaboration  
Projects  
Challenges  
Opportunities  
Scalability***

**A green, inclusive, innovative,  
sustainable future**

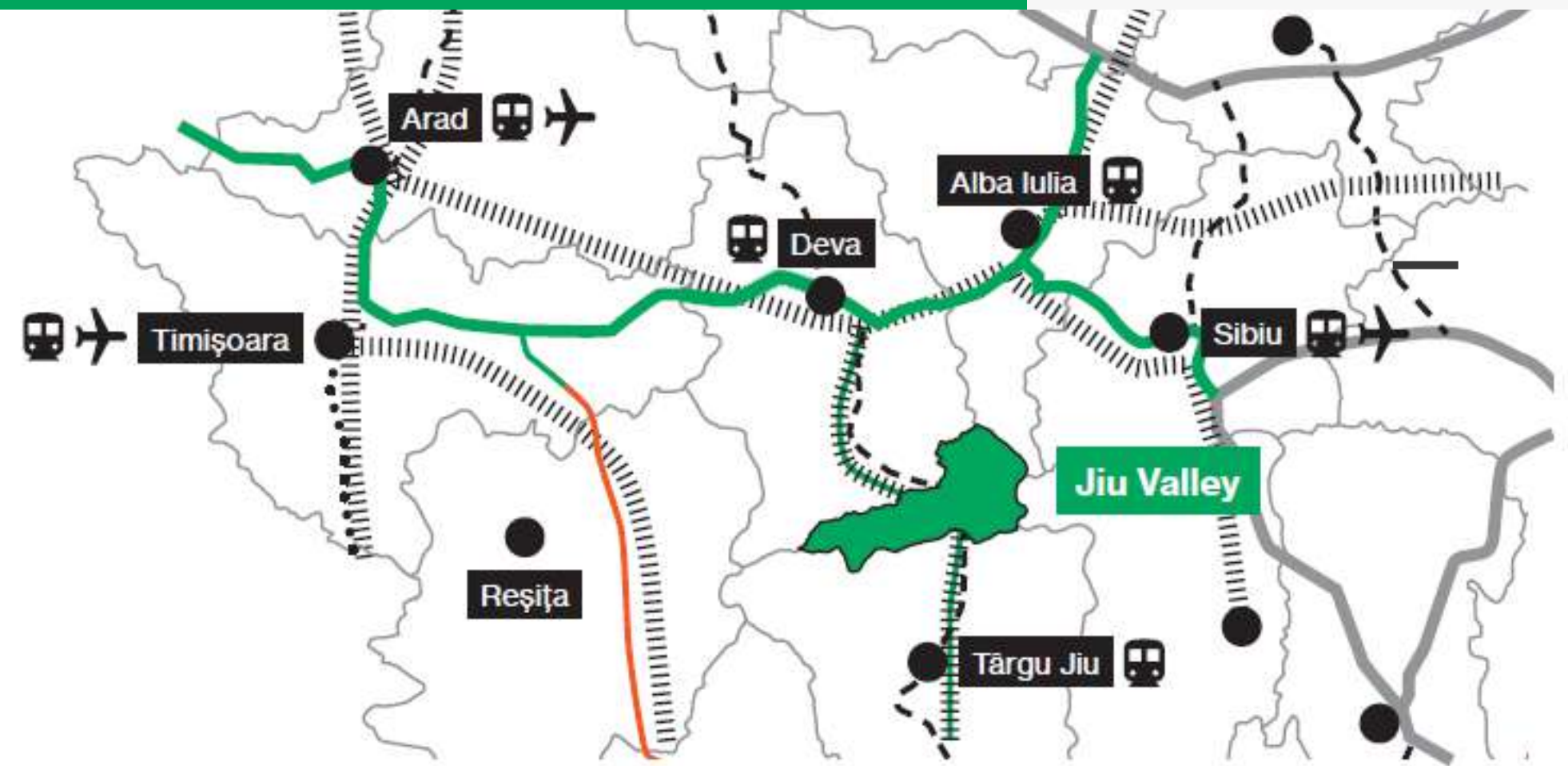
by the Jiu Valley community



# ABOUT JIU VALLEY

The largest underground mining microregion in Romania, at the core of the Jiu Conurbation (connecting Hunedoara to Gorj and Dolj counties).

The largest urban area in Romania totally surrounded by natural protected sites.



Major infrastructure proposed in the General Transport Masterplan

Highway (GTM)

Core network

County capital

Railway

Train station

Airport

Express roads (GTM)

Comprehensive network

County limit

Under construction

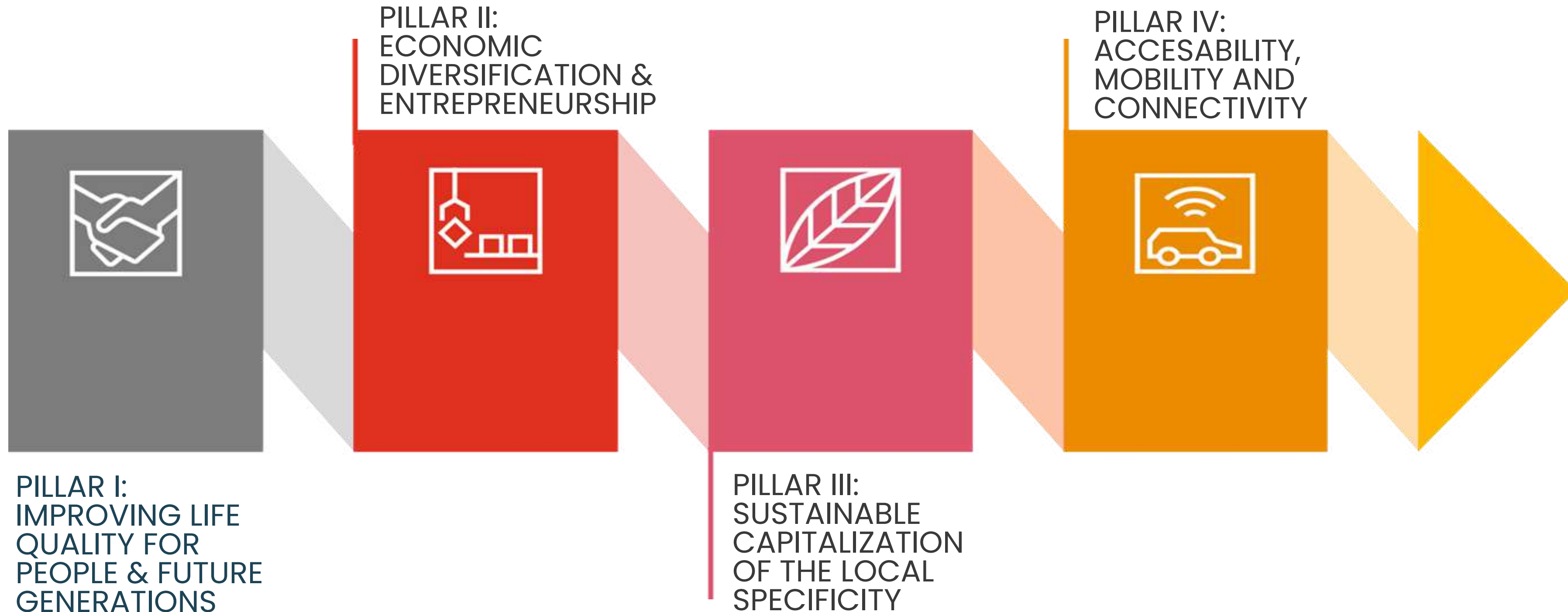
Finished

1 hour away from the A1 Highway, 2 hours away from the closest international airport, and 5 hours away from Bucharest, it recovers through **a just transition process monitored by an entity including the representatives of all relevant stakeholders in the microregion.**

# THE STRATEGY FOR ECONOMIC, SOCIAL AND ENVIRONMENT DEVELOPMENT 2022-2030

Financed by the EC through Structural Reforms Program  
Adopted by the Romanian Government in July 13th, 2022

JU VALLEY



# SUPPORT

Just transition fostered by official and unofficial means, through the Just Transition Platform and START Program of the European Commission, the Functional areas in the EU project (the European Commission and the World Bank), the Jiu Valley Initiative of the Romanian Government, Western Region Development Agency and NGO initiatives, together with support from European non-governmental organisations active on just transition.





# CHECK & BALANCE

Asociația pentru Dezvoltare Teritorială Integrată  
Valea Jiului / **Association for Integrated Territorial  
Development of the Jiu Valley**

preceded by the Memorandum of the Romanian  
Government and the Protocol for Just Transition  
signed by the Mayors of the Jiu Valley in Brussels.

The Protocol of collaboration for the development of  
the Jiu Valley, signed by the local actors (Mayors,  
University, Mining company – CNH, INSEMEX, private  
sector, syndicates, and NGOs).



## Local administration

Hunedoara County Council  
Municipalities of Aninoasa,  
Lupeni, Petrita, Petroșani,  
Uricani, Vulcan

## Academia

University of Petroșani

## Entrepreneurs

Association of the Jiu Valley  
Initiative Committee

## Civil society

Association Jiu Valley Development  
Society Project, Autism Helping  
Hands, Urban Lab Valea Jiului  
(members of the Engaged Jiu  
Valley NGOs Coalition)



- Green transport
- Green economy
- **Cities for people**
- #1 air quality
- Nature – urban environment balance

# AN EXEMPLARY GREEN FUTURE

- Vibrant community
- Technological Hub
- Digitalization
- Innovation Research Center
- Sustainable tourism
- Cultural activities





# JUST TRANSITION PROCESS

- over **40 integrated project ideas**
- over **600 independent project ideas**  
(gathered from local administrations, academic sector, private sector, civil society, citizens)
- different stages of implementation (from project idea to feasibility study or technical project and building permit) varying from a municipality to another







# BUSINESS INFRASTRUCTURE

The Jiu Valley Industrial and Business Complex (CIAVJ) aims to support the existing local private environment, encourage local entrepreneurship, as well as attract strong investors for the economic development of the area. CIAVJ will include a management team at the micro-regional level and departments for attracting new investors, labor qualification and retraining, business incubator, technical assistance for the private entrepreneurs and the business center.

[www.investinjiuvalley.com](http://www.investinjiuvalley.com)



# BUSINESS INFRASTRUCTURE

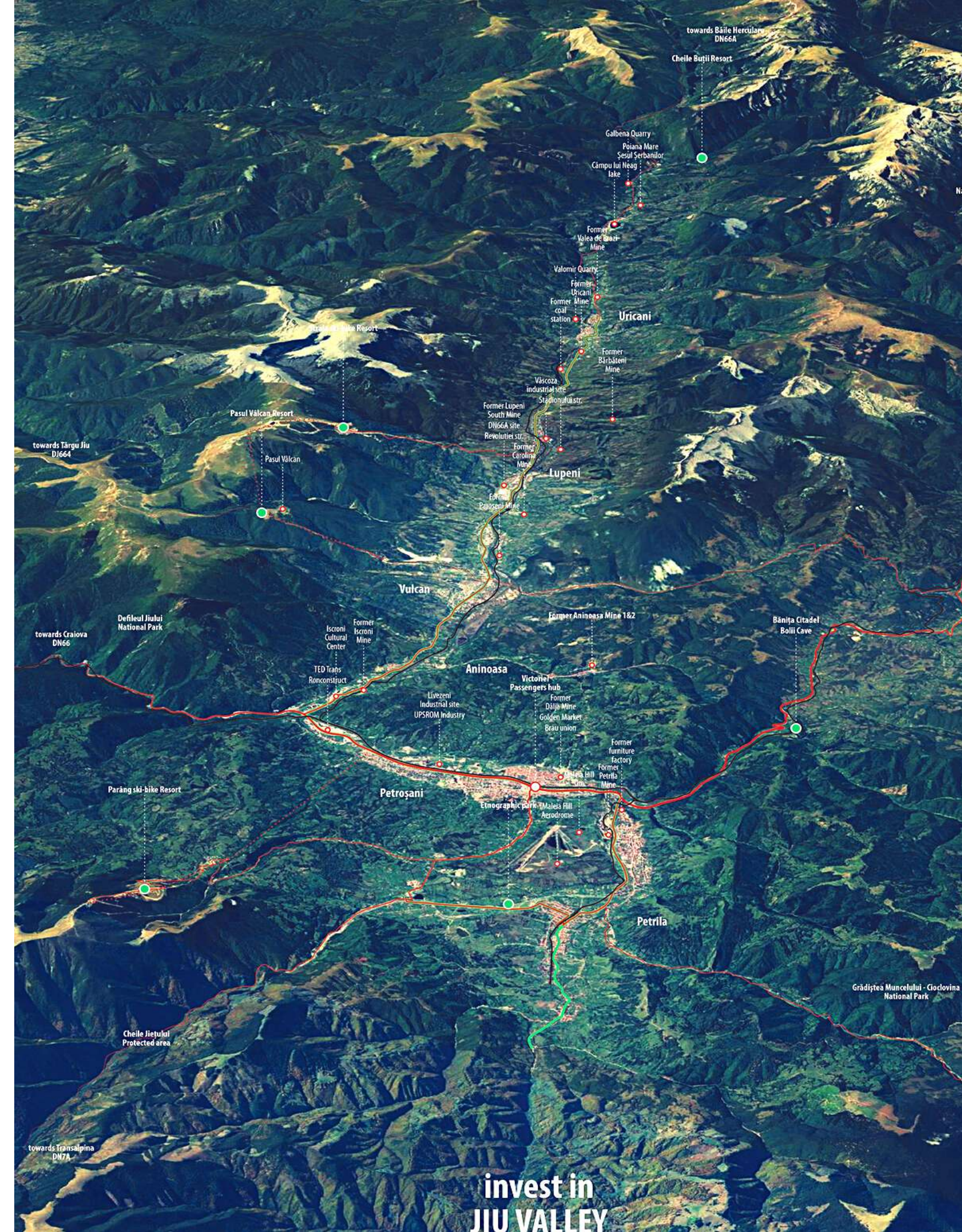
Science and Technology Park  
Petrila Mine

Technological / industrial  
park / business incubators in  
the former EM Uricani and  
the former coal preparation



Invest in Jiu Valley –  
attracting investors and  
promoting opportunities to  
local entrepreneurs.

Construction of industrial halls  
and warehouses for  
industrial and administrative functions  
– Petroșani, Aninoasa, Vulcan, Lupeni







# GREEN INFRASTRUCTURE

Jiu Valley GRID LAB: Implementation of green smart scalable projects at Jiu Valley level

Smart neighbourhoods. Green Smart District in Petrosani, scalable in the other towns.

Jiu Valley Photovoltaic Park (Maleia Hill in Petrosani and Petrila, public buildings, providing energy for the whole public system in Jiu Valley).

Thermal Stations and related thermal distribution networks.

Smart eco-efficient public lighting

Electro-mobility, fast charging stations.

Connected bicycle lanes for the entire Jiu Valley.

Jiu Valley urban train





# URBAN REGENERATION

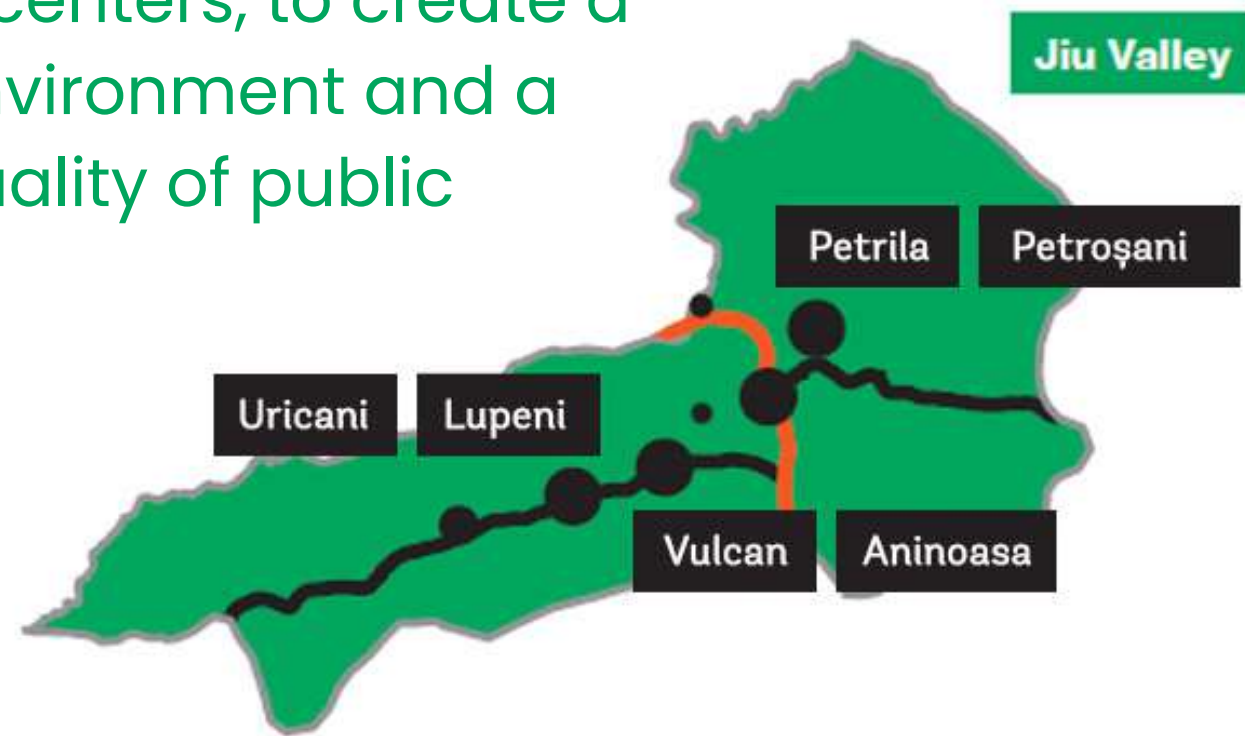
Regeneration of historic and modern centers, to create a better environment and a better quality of public spaces.

Investment in green transport infrastructure, and thermal rehabilitation form public and private buildings, large scale green areas for a better air quality in the urban cores.



# URBAN REGENERATION

Regeneration of historic and modern centers, to create a better environment and a better quality of public spaces.



Large scale green areas for a better air quality in the urban cores.

Green transport infrastructure, and thermal rehabilitation for public and private buildings







# SUSTAINABLE INTEGRATED TOURISM

Sustainable integrated project for the development of mountain and adventure tourism in the Jiului Valley through the design, modernization, homologation, digitization and promotion of mountain tourist routes and trans-regional thematic ones, caves and tourist structures with accommodation functions specific to the mountain area, such as refuges mountains, camping areas and cabins.



# INTEGRATED TOURISM

Competences in tourism for professionals

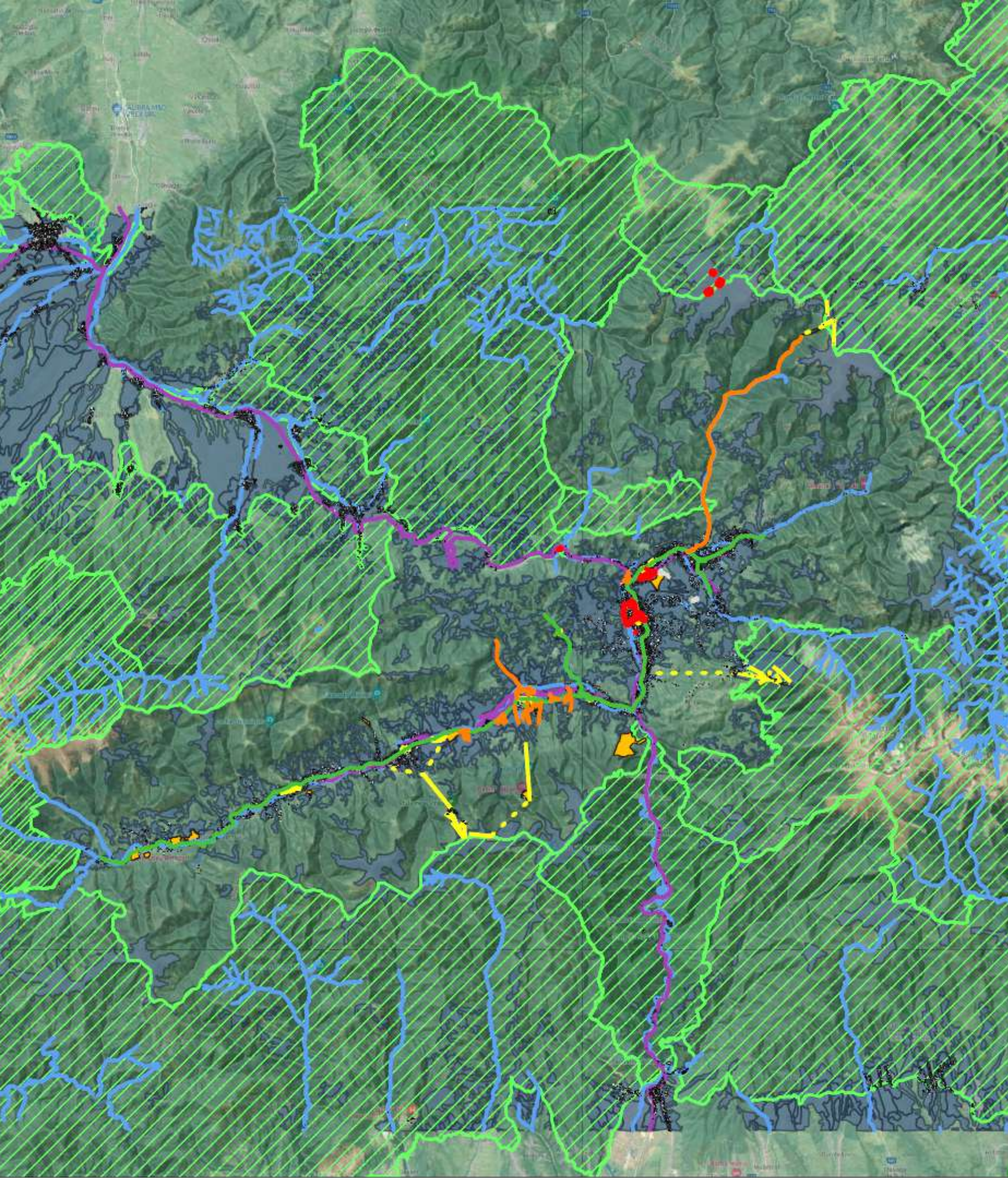
Establishment of new ski areas

Repurposing of abandoned lands by building up outdoor amusement parks and sports tracks



Integrated project regarding the expansion of the ski area in the Jiului Valley, artificial snow production infrastructure, building mountain bike trails (ski & bike resorts), spa & wellness centers (the ski & bike concept & spa holidays) and the development of infrastructure for appropriate urban and mountain mobility





# SPATIAL PLANNING

Integrated spatial planning at the level of each municipality, using the existing means at hand (planning at the micro-regional or municipal level) or those developed through the latest legislative changes (urban planning at the level of metropolitan areas).

Monitoring and control of the just transition process.



# SPATIAL PLANNING

Integrated urban mobility plan for the micro-region: Green Line and adjacent projects



General Urban Plans for every municipality and the mountains resorts

Establishing metropolitan areas around Petroșani and Lupeni (according to the new metropolitan areas law)

Establishment of a planning center under the Jiu Valley Integrated Territorial Development Association, to monitor and control the just transition process





# CONNECTIVITY TO MAJOR CORRIDORS

Passenger and cargo connectivity to major transport corridors, replacing the former main usage ("the Jiu Valley coal line") to the new economic trends.

Green transport and accesibility between major touristic areas and main cities in Romania – investments would impact in a better connectivity the rail and road TEN-T corridors.



# CONNECTIVITY TO MAJOR CORRIDORS

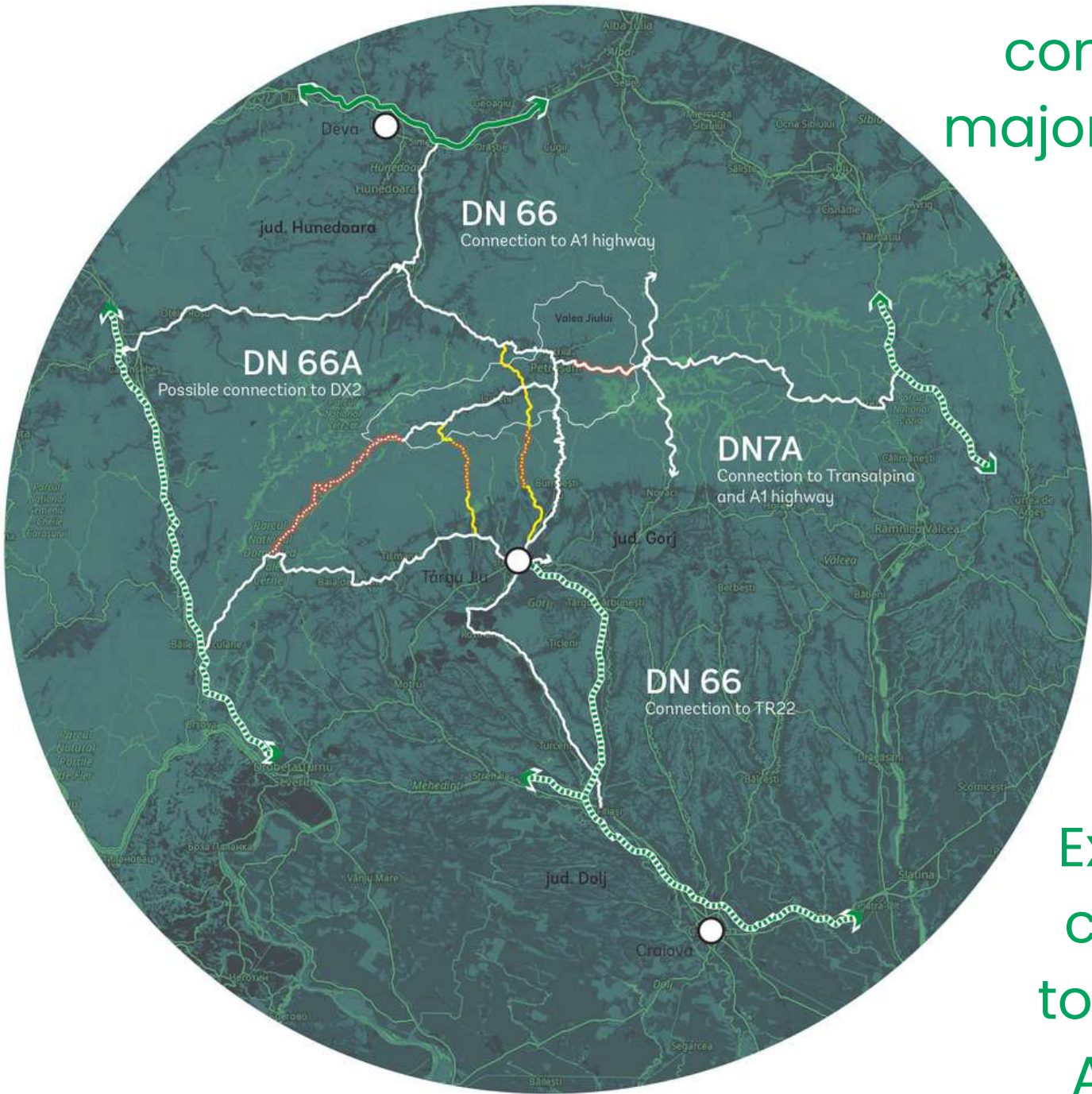
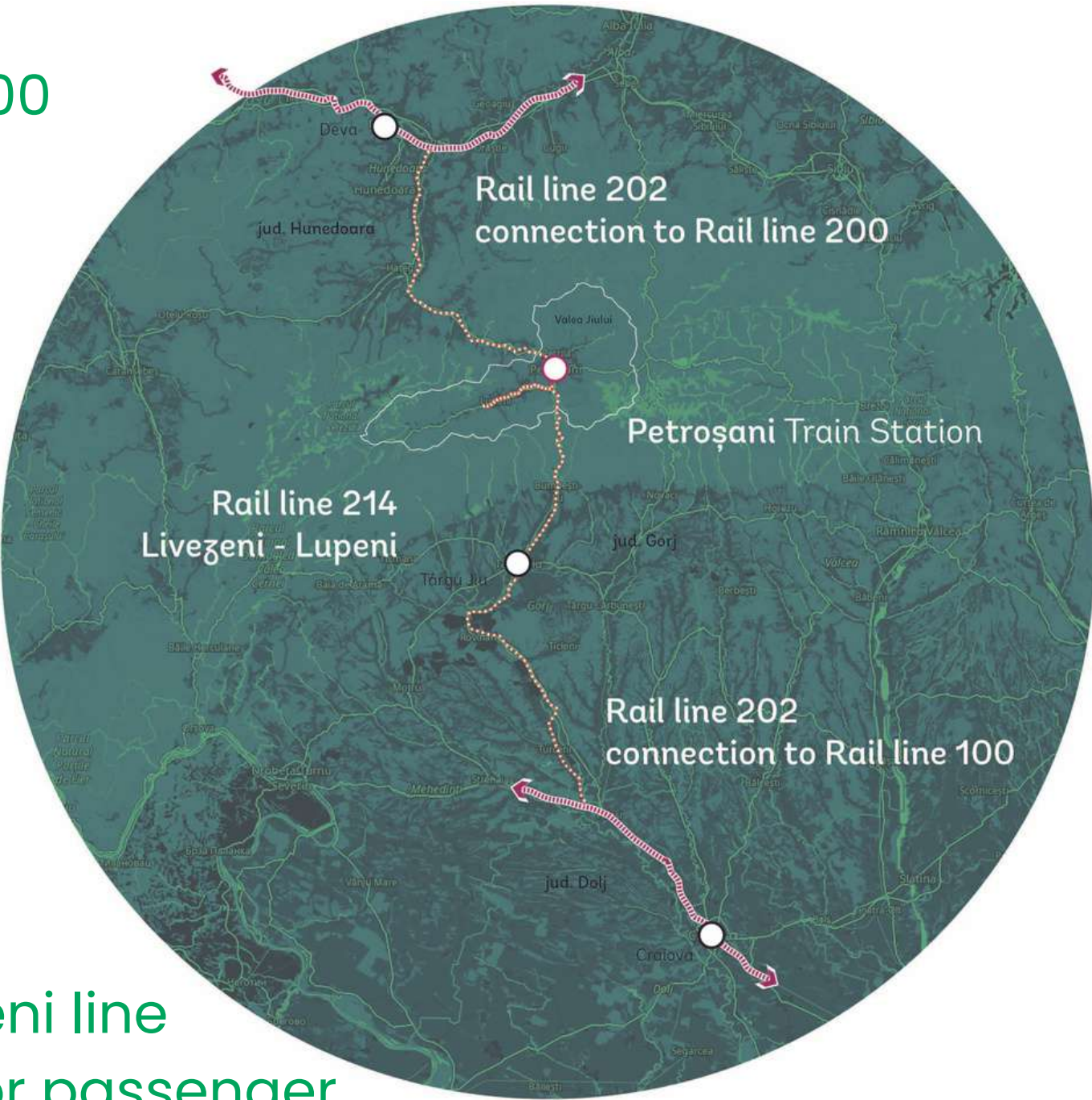
Quick wins investment in rail lines, for better connection to the 100 and 200 main lines.

Infrastructure rehabilitation in Petrosani Train Station

Livezeni – Lupeni line reactivation for passenger transport

Quick wins interventions between municipalities

Redevelopment and modernization of national road for better connection to major highways and pors



Expressway connection to the major A1 highway corridor



# PILOT PROJECT PETRILA MINE

## JIU VALLEY STRATEGY

Integrated project to repurpose the former Petrilă Mining Site into a cultural, research, development and innovation center.

Largest post-industrial bottom-up regeneration project in Romania.



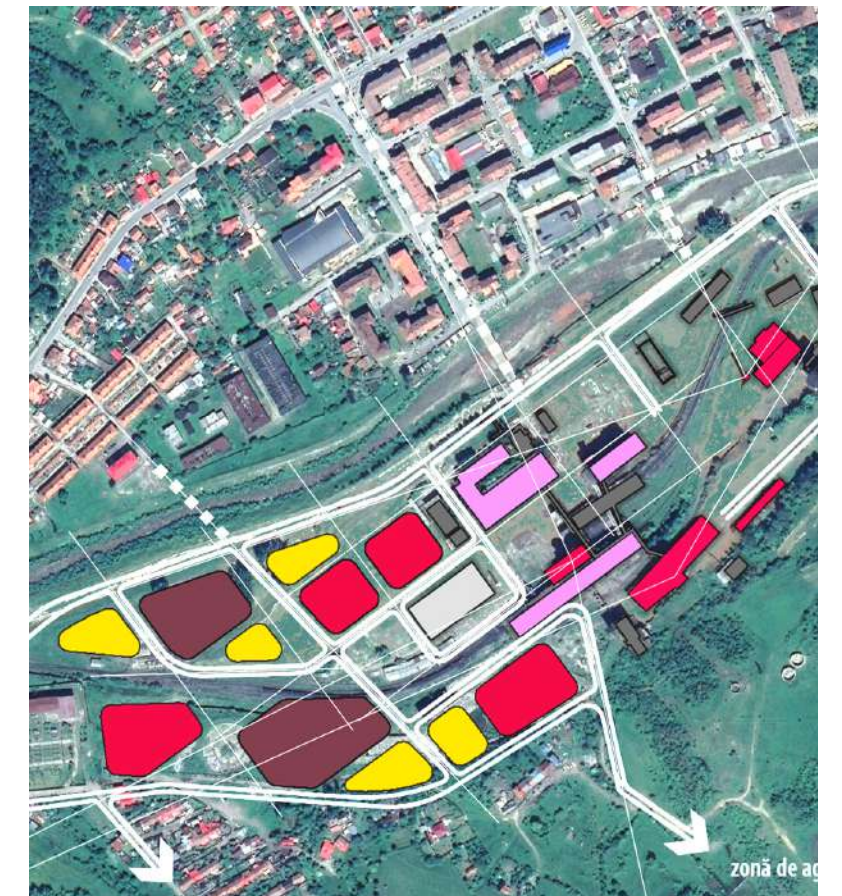
current status



cultural core



center for creativity  
and innovation



industrial and  
business center



# PILOT PROJECT

# PUBLIC PRIVATE INTEGRATED SMART DISTRICT

# GRIDLAB



TRACER / WB PROJECT

EE & RES integration in buildings  
and electricity storage facilities (3  
public & 1 private buildings,  
2 storage F.)

RES based micro-DHCS (1  
Thermal Station and related  
thermal distribution network)

Smart eco-efficient public  
lighting (demo-living lab)

Electro-mobility (eVs and 2 fast  
charging stations); E. Digital HUB  
(hard, soft).



# PILOT PROJECT: ROBOTICS VALLEY

## DIGITAL SKILLS AND COMPETENCES



Research and innovation center: the development of training centers in robotics and new technologies where the best students from the high schools in Jiu Valley will be selected, where by collaborating in robotics, mathematics, informatics (STEAM) teams they will participate in national and international competitions.

Development of creativity and innovation centers in relation to the University and highschoools.

Repurposing of abandoned lands by building up outdoor amusement parks and sports tracks.





# CHALLENGES

- Different stages in implementing the integrated projects
- Lack of administrative capacity to cooperate for major projects, but willingness to improve in every aspect
- Lack of coordination between the main strategic plans (local strategies, general urban plans, county plan etc..)
- Lack of local funds for municipalities in order to plan and cofinance mature projects.



LET'S  
GROW  
GREEN  
TOGETHER!



valea.jiului.implicata@gmail.com || +40 722 697 550